

Classroom
Edition

BRAIN TRAINING WITH ...

THE NEW NUMBER CRUNCHERS

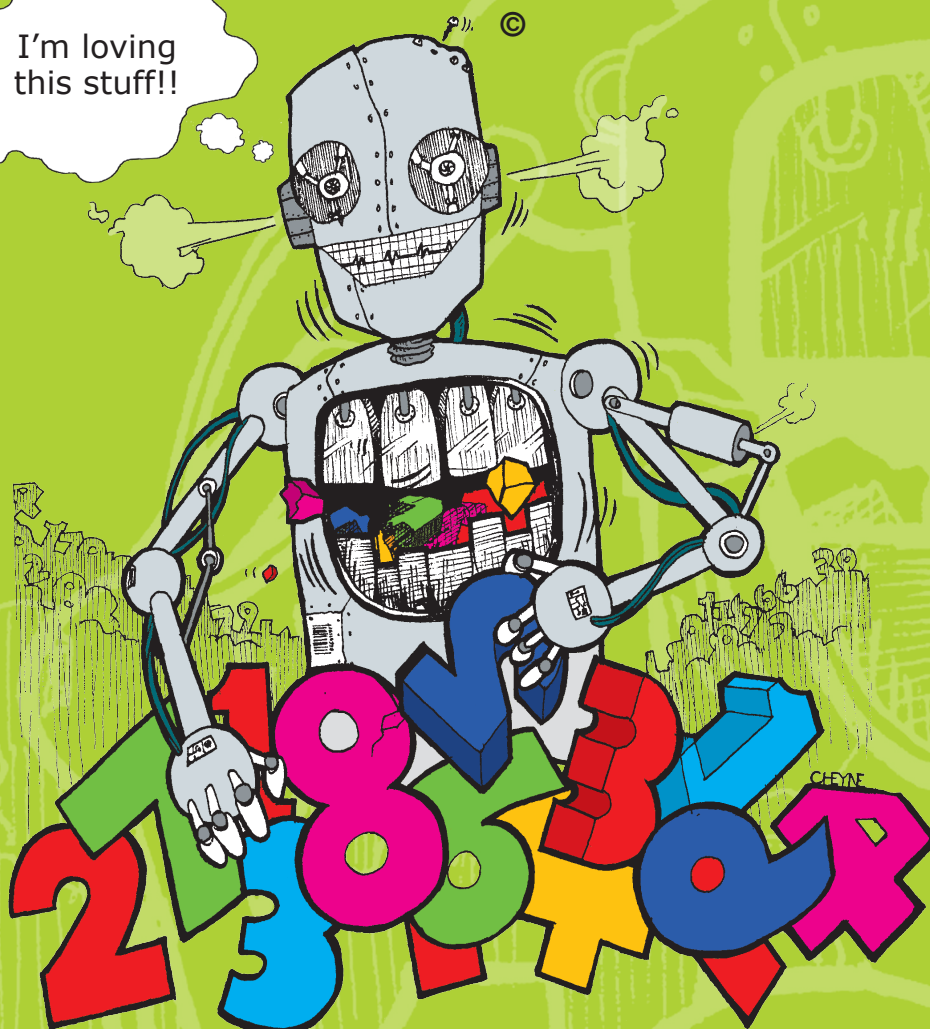
by Barry Clayton

LEVEL 6: Multiplying or Dividing

One Calculation - End Answers Only

(BASIC NUMBER FACTS)

I'm loving
this stuff!!



Robit McCruncher®

www.robitmccruncher.co.nz



**BRAINTOOLS FOR
BRAIN TRAINING**

**ALL AGES,
ALL STAGES**

I'm loving
this stuff!!



THE NEW NUMBER CRUNCHERS

BASIC NUMBER FACTS

LEVEL 6: Multiplying or Dividing - End answers only

LEVEL 6
SET 1

LIST A

1. $0 \times 1 = \square$
2. $1 \div 1 = \square$
3. $1 \times 2 = \square$
4. $2 \times 2 = \square$
5. $4 \div 4 = \square$
6. $70 \div 10 = \square$
7. $10 \times 1 = \square$
8. $18 \div 2 = \square$
9. $3 \times 2 = \square$
10. $9 \times 2 = \square$
11. $3 \times 10 = \square$
12. $40 \div 4 = \square$
13. $35 \div 5 = \square$
14. $3 \times 6 = \square$
15. $5 \times 9 = \square$
16. $24 \div 3 = \square$
17. $36 \div 4 = \square$
18. $8 \times 9 = \square$
19. $42 \div 7 = \square$
20. $45 \div 9 = \square$

LIST B

1. $1 \times 5 = \square$
2. $2 \div 1 = \square$
3. $0 \times 3 = \square$
4. $10 \times 2 = \square$
5. $5 \div 5 = \square$
6. $80 \div 10 = \square$
7. $5 \times 0 = \square$
8. $20 \div 2 = \square$
9. $4 \times 2 = \square$
10. $9 \times 2 = \square$
11. $4 \times 10 = \square$
12. $50 \div 5 = \square$
13. $27 \div 9 = \square$
14. $3 \times 7 = \square$
15. $6 \times 8 = \square$
16. $48 \div 6 = \square$
17. $32 \div 4 = \square$
18. $7 \times 9 = \square$
19. $49 \div 7 = \square$
20. $48 \div 8 = \square$

LIST C

1. $2 \times 3 = \square$
2. $0 \times 5 = \square$
3. $3 \div 1 = \square$
4. $1 \times 4 = \square$
5. $6 \div 6 = \square$
6. $10 \times 4 = \square$
7. $90 \div 10 = \square$
8. $9 \div 3 = \square$
9. $5 \times 1 = \square$
10. $9 \times 10 = \square$
11. $5 \times 10 = \square$
12. $30 \div 3 = \square$
13. $28 \div 7 = \square$
14. $3 \times 8 = \square$
15. $27 \div 3 = \square$
16. $63 \div 7 = \square$
17. $6 \times 7 = \square$
18. $9 \times 9 = \square$
19. $56 \div 7 = \square$
20. $72 \div 9 = \square$

LIST D

1. $10 \times 3 = \square$
2. $0 \times 4 = \square$
3. $4 \div 1 = \square$
4. $1 \times 6 = \square$
5. $7 \div 7 = \square$
6. $100 \div 10 = \square$
7. $4 \times 0 = \square$
8. $8 \div 4 = \square$
9. $8 \times 1 = \square$
10. $6 \times 10 = \square$
11. $60 \div 6 = \square$
12. $15 \div 5 = \square$
13. $3 \times 5 = \square$
14. $3 \times 9 = \square$
15. $48 \div 8 = \square$
16. $6 \times 4 = \square$
17. $54 \div 6 = \square$
18. $9 \times 6 = \square$
19. $54 \div 9 = \square$
20. $28 \div 7 = \square$

LIST E

1. $0 \times 2 = \square$
2. $2 \times 4 = \square$
3. $5 \div 1 = \square$
4. $1 \times 3 = \square$
5. $8 \div 8 = \square$
6. $10 \times 5 = \square$
7. $4 \div 2 = \square$
8. $10 \div 5 = \square$
9. $8 \times 2 = \square$
10. $7 \times 10 = \square$
11. $80 \div 8 = \square$
12. $20 \div 5 = \square$
13. $4 \times 4 = \square$
14. $4 \times 7 = \square$
15. $56 \div 8 = \square$
16. $6 \times 5 = \square$
17. $72 \div 8 = \square$
18. $9 \times 7 = \square$
19. $72 \div 9 = \square$
20. $32 \div 8 = \square$

LIST F

1. $1 \times 7 = \square$
2. $6 \div 1 = \square$
3. $0 \times 6 = \square$
4. $2 \times 5 = \square$
5. $9 \div 9 = \square$
6. $6 \div 3 = \square$
7. $10 \times 6 = \square$
8. $12 \div 6 = \square$
9. $5 \times 2 = \square$
10. $8 \times 10 = \square$
11. $70 \div 7 = \square$
12. $20 \div 4 = \square$
13. $5 \times 3 = \square$
14. $4 \times 8 = \square$
15. $64 \div 8 = \square$
16. $42 \div 7 = \square$
17. $6 \times 6 = \square$
18. $9 \times 8 = \square$
19. $63 \div 9 = \square$
20. $36 \div 9 = \square$

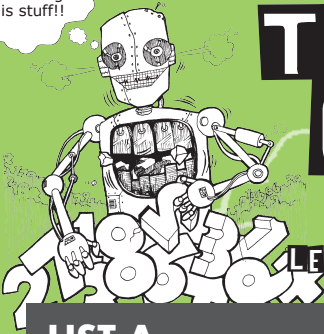


PUBLISHED IN NEW ZEALAND BY
THE OUTER EDGE LTD

© Copyright 2010 Barry Clayton

www.robitmccruncher.co.nz

I'm loving
this stuff!!



THE NEW NUMBER CRUNCHERS

BASIC NUMBER FACTS

LEVEL 6: Multiplying or Dividing - End answers only

LEVEL 6
SET 2

LIST A

1. $1 \times 8 = \square$
2. $0 \times 7 = \square$
3. $7 \div 1 = \square$
4. $2 \times 6 = \square$
5. $10 \div 10 = \square$
6. $8 \div 2 = \square$
7. $10 \times 7 = \square$
8. $14 \div 7 = \square$
9. $4 \times 3 = \square$
10. $8 \times 0 = \square$
11. $12 \div 4 = \square$
12. $30 \div 5 = \square$
13. $21 \div 3 = \square$
14. $4 \times 9 = \square$
15. $40 \div 5 = \square$
16. $24 \div 6 = \square$
17. $7 \times 6 = \square$
18. $8 \times 3 = \square$
19. $81 \div 9 = \square$
20. $56 \div 7 = \square$

LIST B

1. $0 \times 9 = \square$
2. $8 \div 1 = \square$
3. $1 \times 9 = \square$
4. $20 \div 10 = \square$
5. $6 \div 2 = \square$
6. $2 \times 7 = \square$
7. $16 \div 8 = \square$
8. $10 \times 8 = \square$
9. $7 \times 0 = \square$
10. $3 \times 4 = \square$
11. $25 \div 5 = \square$
12. $15 \div 3 = \square$
13. $4 \times 5 = \square$
14. $5 \times 5 = \square$
15. $35 \div 7 = \square$
16. $28 \div 4 = \square$
17. $7 \times 5 = \square$
18. $8 \times 4 = \square$
19. $72 \div 8 = \square$
20. $54 \div 9 = \square$

LIST C

1. $1 \times 10 = \square$
2. $9 \div 1 = \square$
3. $1 \times 0 = \square$
4. $30 \div 10 = \square$
5. $10 \div 2 = \square$
6. $18 \div 9 = \square$
7. $2 \times 8 = \square$
8. $10 \times 9 = \square$
9. $6 \times 0 = \square$
10. $7 \times 2 = \square$
11. $18 \div 6 = \square$
12. $20 \div 4 = \square$
13. $5 \times 4 = \square$
14. $6 \times 9 = \square$
15. $45 \div 5 = \square$
16. $24 \div 3 = \square$
17. $7 \times 4 = \square$
18. $8 \times 5 = \square$
19. $56 \div 8 = \square$
20. $49 \div 7 = \square$

LIST D

1. $2 \times 0 = \square$
2. $0 \times 10 = \square$
3. $10 \div 1 = \square$
4. $40 \div 10 = \square$
5. $2 \times 9 = \square$
6. $10 \times 10 = \square$
7. $12 \div 2 = \square$
8. $21 \div 7 = \square$
9. $9 \times 0 = \square$
10. $6 \times 1 = \square$
11. $90 \div 9 = \square$
12. $18 \div 3 = \square$
13. $6 \times 3 = \square$
14. $5 \times 6 = \square$
15. $36 \div 6 = \square$
16. $7 \times 7 = \square$
17. $45 \div 9 = \square$
18. $8 \times 6 = \square$
19. $54 \div 6 = \square$
20. $81 \div 9 = \square$

LIST E

1. $2 \times 1 = \square$
2. $2 \div 2 = \square$
3. $0 \times 8 = \square$
4. $2 \times 10 = \square$
5. $50 \div 10 = \square$
6. $14 \div 2 = \square$
7. $3 \times 1 = \square$
8. $12 \div 3 = \square$
9. $9 \times 1 = \square$
10. $6 \times 2 = \square$
11. $16 \div 4 = \square$
12. $24 \div 4 = \square$
13. $9 \times 2 = \square$
14. $5 \times 7 = \square$
15. $40 \div 8 = \square$
16. $7 \times 8 = \square$
17. $36 \div 9 = \square$
18. $8 \times 7 = \square$
19. $63 \div 9 = \square$
20. $64 \div 8 = \square$

LIST F

1. $1 \times 1 = \square$
2. $3 \div 3 = \square$
3. $10 \times 0 = \square$
4. $60 \div 10 = \square$
5. $3 \times 0 = \square$
6. $4 \times 1 = \square$
7. $16 \div 2 = \square$
8. $12 \div 4 = \square$
9. $7 \times 1 = \square$
10. $3 \times 3 = \square$
11. $30 \div 6 = \square$
12. $27 \div 9 = \square$
13. $4 \times 6 = \square$
14. $5 \times 8 = \square$
15. $32 \div 8 = \square$
16. $42 \div 6 = \square$
17. $7 \times 3 = \square$
18. $8 \times 8 = \square$
19. $63 \div 7 = \square$
20. $35 \div 7 = \square$



PUBLISHED IN NEW ZEALAND BY
THE OUTER EDGE LTD

© Copyright 2010 Barry Clayton

www.robitmccruncher.co.nz

I'm loving
this stuff!!



THE NEW NUMBER CRUNCHERS

BASIC NUMBER FACTS

LEVEL 6: Multiplying or Dividing - End answers only

LEVEL 6
SET 3

LIST A

1. $1 \div 1 = \square$
2. $0 \times 1 = \square$
3. $2 \times 2 = \square$
4. $1 \times 2 = \square$
5. $70 \div 10 = \square$
6. $4 \div 4 = \square$
7. $18 \div 2 = \square$
8. $10 \times 1 = \square$
9. $9 \times 2 = \square$
10. $3 \times 2 = \square$
11. $40 \div 4 = \square$
12. $3 \times 10 = \square$
13. $3 \times 6 = \square$
14. $35 \div 5 = \square$
15. $24 \div 3 = \square$
16. $5 \times 9 = \square$
17. $36 \div 4 = \square$
18. $42 \div 7 = \square$
19. $8 \times 9 = \square$
20. $45 \div 9 = \square$

LIST B

1. $2 \div 1 = \square$
2. $1 \times 5 = \square$
3. $10 \times 2 = \square$
4. $0 \times 3 = \square$
5. $80 \div 10 = \square$
6. $5 \div 5 = \square$
7. $20 \div 2 = \square$
8. $5 \times 0 = \square$
9. $9 \times 2 = \square$
10. $4 \times 2 = \square$
11. $50 \div 5 = \square$
12. $4 \times 10 = \square$
13. $27 \div 9 = \square$
14. $3 \times 7 = \square$
15. $48 \div 6 = \square$
16. $6 \times 8 = \square$
17. $7 \times 9 = \square$
18. $32 \div 4 = \square$
19. $48 \div 8 = \square$
20. $49 \div 7 = \square$

LIST C

1. $0 \times 5 = \square$
2. $2 \times 3 = \square$
3. $1 \times 4 = \square$
4. $3 \div 1 = \square$
5. $10 \times 4 = \square$
6. $6 \div 6 = \square$
7. $9 \div 3 = \square$
8. $90 \div 10 = \square$
9. $9 \times 10 = \square$
10. $5 \times 1 = \square$
11. $30 \div 3 = \square$
12. $5 \times 10 = \square$
13. $3 \times 8 = \square$
14. $28 \div 7 = \square$
15. $63 \div 7 = \square$
16. $27 \div 3 = \square$
17. $9 \times 9 = \square$
18. $6 \times 7 = \square$
19. $72 \div 9 = \square$
20. $56 \div 7 = \square$

LIST D

1. $0 \times 4 = \square$
2. $10 \times 3 = \square$
3. $1 \times 6 = \square$
4. $4 \div 1 = \square$
5. $100 \div 10 = \square$
6. $7 \div 7 = \square$
7. $8 \div 4 = \square$
8. $4 \times 0 = \square$
9. $6 \times 10 = \square$
10. $8 \times 1 = \square$
11. $15 \div 5 = \square$
12. $60 \div 6 = \square$
13. $3 \times 9 = \square$
14. $3 \times 5 = \square$
15. $6 \times 4 = \square$
16. $48 \div 8 = \square$
17. $9 \times 6 = \square$
18. $54 \div 6 = \square$
19. $28 \div 7 = \square$
20. $54 \div 9 = \square$

LIST E

1. $2 \times 4 = \square$
2. $0 \times 2 = \square$
3. $1 \times 3 = \square$
4. $5 \div 1 = \square$
5. $10 \times 5 = \square$
6. $8 \div 8 = \square$
7. $10 \div 5 = \square$
8. $4 \div 2 = \square$
9. $7 \times 10 = \square$
10. $8 \times 2 = \square$
11. $20 \div 5 = \square$
12. $80 \div 8 = \square$
13. $4 \times 7 = \square$
14. $4 \times 4 = \square$
15. $6 \times 5 = \square$
16. $56 \div 8 = \square$
17. $9 \times 7 = \square$
18. $72 \div 8 = \square$
19. $32 \div 8 = \square$
20. $72 \div 9 = \square$

LIST F

1. $6 \div 1 = \square$
2. $1 \times 7 = \square$
3. $2 \times 5 = \square$
4. $0 \times 6 = \square$
5. $6 \div 3 = \square$
6. $9 \div 9 = \square$
7. $12 \div 6 = \square$
8. $10 \times 6 = \square$
9. $8 \times 10 = \square$
10. $5 \times 2 = \square$
11. $20 \div 4 = \square$
12. $70 \div 7 = \square$
13. $4 \times 8 = \square$
14. $5 \times 3 = \square$
15. $42 \div 7 = \square$
16. $64 \div 8 = \square$
17. $9 \times 8 = \square$
18. $6 \times 6 = \square$
19. $36 \div 9 = \square$
20. $63 \div 9 = \square$

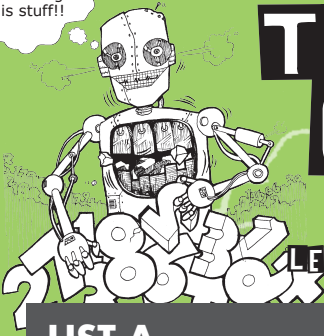


PUBLISHED IN NEW ZEALAND BY
THE OUTER EDGE LTD

© Copyright 2010 Barry Clayton

www.robitmccruncher.co.nz

I'm loving
this stuff!!



THE NEW NUMBER CRUNCHERS

BASIC NUMBER FACTS

LEVEL 6: Multiplying or Dividing - End answers only

LEVEL 6
SET 4

LIST A

1. $0 \times 7 = \square$
2. $1 \times 8 = \square$
3. $2 \times 6 = \square$
4. $7 \div 1 = \square$
5. $8 \div 2 = \square$
6. $10 \div 10 = \square$
7. $14 \div 7 = \square$
8. $10 \times 7 = \square$
9. $8 \times 0 = \square$
10. $4 \times 3 = \square$
11. $30 \div 5 = \square$
12. $12 \div 4 = \square$
13. $4 \times 9 = \square$
14. $21 \div 3 = \square$
15. $24 \div 6 = \square$
16. $40 \div 5 = \square$
17. $8 \times 3 = \square$
18. $7 \times 6 = \square$
19. $56 \div 7 = \square$
20. $81 \div 9 = \square$

LIST B

1. $8 \div 1 = \square$
2. $0 \times 9 = \square$
3. $20 \div 10 = \square$
4. $1 \times 9 = \square$
5. $2 \times 7 = \square$
6. $6 \div 2 = \square$
7. $10 \times 8 = \square$
8. $16 \div 2 = \square$
9. $3 \times 4 = \square$
10. $7 \times 0 = \square$
11. $15 \div 3 = \square$
12. $25 \div 5 = \square$
13. $5 \times 5 = \square$
14. $4 \times 5 = \square$
15. $28 \div 4 = \square$
16. $35 \div 7 = \square$
17. $8 \times 4 = \square$
18. $7 \times 5 = \square$
19. $54 \div 9 = \square$
20. $72 \div 8 = \square$

LIST C

1. $9 \div 1 = \square$
2. $1 \times 10 = \square$
3. $30 \div 10 = \square$
4. $1 \times 0 = \square$
5. $18 \div 9 = \square$
6. $10 \div 2 = \square$
7. $10 \times 9 = \square$
8. $2 \times 8 = \square$
9. $7 \times 2 = \square$
10. $6 \times 0 = \square$
11. $20 \div 4 = \square$
12. $18 \div 6 = \square$
13. $6 \times 9 = \square$
14. $5 \times 4 = \square$
15. $24 \div 3 = \square$
16. $45 \div 5 = \square$
17. $8 \times 5 = \square$
18. $7 \times 4 = \square$
19. $49 \div 7 = \square$
20. $56 \div 8 = \square$

LIST D

1. $0 \times 10 = \square$
2. $2 \times 0 = \square$
3. $40 \div 10 = \square$
4. $10 \div 1 = \square$
5. $10 \times 10 = \square$
6. $2 \times 9 = \square$
7. $21 \div 7 = \square$
8. $12 \div 2 = \square$
9. $6 \times 1 = \square$
10. $9 \times 0 = \square$
11. $6 \times 3 = \square$
12. $18 \div 3 = \square$
13. $36 \div 6 = \square$
14. $5 \times 6 = \square$
15. $45 \div 9 = \square$
16. $7 \times 7 = \square$
17. $90 \div 9 = \square$
18. $8 \times 6 = \square$
19. $81 \div 9 = \square$
20. $54 \div 6 = \square$

LIST E

1. $2 \div 2 = \square$
2. $2 \times 1 = \square$
3. $2 \times 10 = \square$
4. $0 \times 8 = \square$
5. $14 \div 2 = \square$
6. $50 \div 10 = \square$
7. $12 \div 3 = \square$
8. $3 \times 1 = \square$
9. $6 \times 2 = \square$
10. $9 \times 1 = \square$
11. $24 \div 4 = \square$
12. $16 \div 4 = \square$
13. $5 \times 7 = \square$
14. $9 \times 2 = \square$
15. $7 \times 8 = \square$
16. $40 \div 8 = \square$
17. $8 \times 7 = \square$
18. $36 \div 9 = \square$
19. $64 \div 8 = \square$
20. $63 \div 9 = \square$

LIST F

1. $3 \div 3 = \square$
2. $1 \times 1 = \square$
3. $60 \div 10 = \square$
4. $10 \times 0 = \square$
5. $4 \times 1 = \square$
6. $3 \times 0 = \square$
7. $12 \div 4 = \square$
8. $16 \div 2 = \square$
9. $3 \times 3 = \square$
10. $7 \times 1 = \square$
11. $27 \div 9 = \square$
12. $30 \div 6 = \square$
13. $5 \times 8 = \square$
14. $4 \times 6 = \square$
15. $42 \div 6 = \square$
16. $32 \div 8 = \square$
17. $8 \times 8 = \square$
18. $7 \times 3 = \square$
19. $35 \div 7 = \square$
20. $63 \div 7 = \square$



PUBLISHED IN NEW ZEALAND BY
THE OUTER EDGE LTD

© Copyright 2010 Barry Clayton

www.robitmccruncher.co.nz

I'm loving
this stuff!!



THE NEW NUMBER CRUNCHERS

BASIC NUMBER FACTS

LEVEL 6: Multiplying or Dividing - End answers only

LEVEL 6
SETS

LIST A

1. $4 \div 4 = \square$
2. $2 \times 2 = \square$
3. $1 \times 2 = \square$
4. $1 \div 1 = \square$
5. $0 \times 1 = \square$
6. $9 \times 2 = \square$
7. $3 \times 2 = \square$
8. $18 \div 2 = \square$
9. $10 \times 1 = \square$
10. $70 \div 10 = \square$
11. $5 \times 9 = \square$
12. $3 \times 6 = \square$
13. $35 \div 5 = \square$
14. $40 \div 4 = \square$
15. $3 \times 10 = \square$
16. $45 \div 9 = \square$
17. $42 \div 7 = \square$
18. $8 \times 9 = \square$
19. $36 \div 4 = \square$
20. $24 \div 3 = \square$

LIST B

1. $5 \div 5 = \square$
2. $10 \times 2 = \square$
3. $0 \times 3 = \square$
4. $2 \div 1 = \square$
5. $1 \times 5 = \square$
6. $9 \times 2 = \square$
7. $4 \times 2 = \square$
8. $20 \div 2 = \square$
9. $5 \times 0 = \square$
10. $80 \div 10 = \square$
11. $6 \times 8 = \square$
12. $3 \times 7 = \square$
13. $27 \div 9 = \square$
14. $50 \div 5 = \square$
15. $4 \times 10 = \square$
16. $48 \div 8 = \square$
17. $49 \div 7 = \square$
18. $7 \times 9 = \square$
19. $32 \div 4 = \square$
20. $48 \div 6 = \square$

LIST C

1. $6 \div 6 = \square$
2. $1 \times 4 = \square$
3. $3 \div 1 = \square$
4. $0 \times 5 = \square$
5. $2 \times 3 = \square$
6. $9 \times 10 = \square$
7. $5 \times 1 = \square$
8. $9 \div 3 = \square$
9. $90 \div 10 = \square$
10. $10 \times 4 = \square$
11. $27 \div 3 = \square$
12. $3 \times 8 = \square$
13. $28 \div 7 = \square$
14. $30 \div 3 = \square$
15. $5 \times 10 = \square$
16. $72 \div 9 = \square$
17. $56 \div 7 = \square$
18. $9 \times 9 = \square$
19. $6 \times 7 = \square$
20. $63 \div 7 = \square$

LIST D

1. $7 \div 7 = \square$
2. $1 \times 6 = \square$
3. $4 \div 1 = \square$
4. $0 \times 4 = \square$
5. $10 \times 3 = \square$
6. $6 \times 10 = \square$
7. $8 \times 1 = \square$
8. $8 \div 4 = \square$
9. $4 \times 0 = \square$
10. $100 \div 10 = \square$
11. $48 \div 8 = \square$
12. $3 \times 9 = \square$
13. $3 \times 5 = \square$
14. $15 \div 5 = \square$
15. $60 \div 6 = \square$
16. $28 \div 7 = \square$
17. $54 \div 9 = \square$
18. $9 \times 6 = \square$
19. $54 \div 6 = \square$
20. $6 \times 4 = \square$

LIST E

1. $8 \div 8 = \square$
2. $1 \times 3 = \square$
3. $5 \div 1 = \square$
4. $2 \times 4 = \square$
5. $0 \times 2 = \square$
6. $7 \times 10 = \square$
7. $8 \times 2 = \square$
8. $10 \div 5 = \square$
9. $4 \div 2 = \square$
10. $10 \times 5 = \square$
11. $56 \div 8 = \square$
12. $4 \times 7 = \square$
13. $4 \times 4 = \square$
14. $20 \div 5 = \square$
15. $80 \div 8 = \square$
16. $32 \div 8 = \square$
17. $72 \div 9 = \square$
18. $9 \times 7 = \square$
19. $72 \div 8 = \square$
20. $6 \times 5 = \square$

LIST F

1. $9 \div 9 = \square$
2. $2 \times 5 = \square$
3. $0 \times 6 = \square$
4. $6 \div 1 = \square$
5. $1 \times 7 = \square$
6. $8 \times 10 = \square$
7. $5 \times 2 = \square$
8. $12 \div 6 = \square$
9. $10 \times 6 = \square$
10. $6 \div 3 = \square$
11. $64 \div 8 = \square$
12. $4 \times 8 = \square$
13. $5 \times 3 = \square$
14. $20 \div 4 = \square$
15. $70 \div 7 = \square$
16. $36 \div 9 = \square$
17. $63 \div 9 = \square$
18. $9 \times 8 = \square$
19. $6 \times 6 = \square$
20. $42 \div 7 = \square$

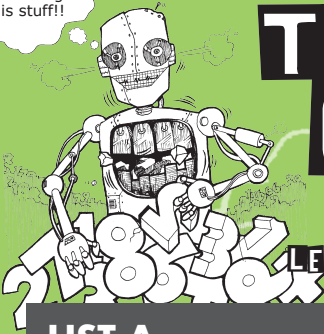


PUBLISHED IN NEW ZEALAND BY
THE OUTER EDGE LTD

© Copyright 2010 Barry Clayton

www.robitmccruncher.co.nz

I'm loving
this stuff!!



THE NEW NUMBER CRUNCHERS

BASIC NUMBER FACTS

LEVEL 6: Multiplying or Dividing - End answers only

LEVEL 6
SET 6

LIST A

1. $10 \div 10 =$ ☐
2. $2 \times 6 =$ ☐
3. $7 \div 1 =$ ☐
4. $0 \times 7 =$ ☐
5. $1 \times 8 =$ ☐
6. $8 \times 0 =$ ☐
7. $4 \times 3 =$ ☐
8. $14 \div 7 =$ ☐
9. $10 \times 7 =$ ☐
10. $8 \div 2 =$ ☐
11. $40 \div 5 =$ ☐
12. $4 \times 9 =$ ☐
13. $21 \div 3 =$ ☐
14. $30 \div 5 =$ ☐
15. $12 \div 4 =$ ☐
16. $56 \div 7 =$ ☐
17. $81 \div 9 =$ ☐
18. $8 \times 3 =$ ☐
19. $7 \times 6 =$ ☐
20. $24 \div 6 =$ ☐

LIST B

1. $6 \div 2 =$ ☐
2. $20 \div 10 =$ ☐
3. $1 \times 9 =$ ☐
4. $8 \div 1 =$ ☐
5. $0 \times 9 =$ ☐
6. $3 \times 4 =$ ☐
7. $7 \times 0 =$ ☐
8. $10 \times 8 =$ ☐
9. $16 \div 8 =$ ☐
10. $2 \times 7 =$ ☐
11. $35 \div 7 =$ ☐
12. $5 \times 5 =$ ☐
13. $4 \times 5 =$ ☐
14. $15 \div 3 =$ ☐
15. $25 \div 5 =$ ☐
16. $54 \div 9 =$ ☐
17. $72 \div 8 =$ ☐
18. $8 \times 4 =$ ☐
19. $7 \times 5 =$ ☐
20. $28 \div 4 =$ ☐

LIST C

1. $10 \div 2 =$ ☐
2. $30 \div 10 =$ ☐
3. $1 \times 0 =$ ☐
4. $9 \div 1 =$ ☐
5. $1 \times 10 =$ ☐
6. $7 \times 2 =$ ☐
7. $6 \times 0 =$ ☐
8. $10 \times 9 =$ ☐
9. $2 \times 8 =$ ☐
10. $18 \div 9 =$ ☐
11. $45 \div 5 =$ ☐
12. $6 \times 9 =$ ☐
13. $5 \times 4 =$ ☐
14. $20 \div 4 =$ ☐
15. $18 \div 6 =$ ☐
16. $49 \div 7 =$ ☐
17. $56 \div 8 =$ ☐
18. $8 \times 5 =$ ☐
19. $7 \times 4 =$ ☐
20. $24 \div 3 =$ ☐

LIST D

1. $2 \times 9 =$ ☐
2. $40 \div 10 =$ ☐
3. $10 \div 1 =$ ☐
4. $0 \times 10 =$ ☐
5. $2 \times 0 =$ ☐
6. $6 \times 1 =$ ☐
7. $9 \times 0 =$ ☐
8. $21 \div 7 =$ ☐
9. $12 \div 2 =$ ☐
10. $10 \times 10 =$ ☐
11. $36 \div 6 =$ ☐
12. $5 \times 6 =$ ☐
13. $6 \times 3 =$ ☐
14. $18 \div 3 =$ ☐
15. $90 \div 9 =$ ☐
16. $81 \div 9 =$ ☐
17. $54 \div 6 =$ ☐
18. $8 \times 6 =$ ☐
19. $45 \div 9 =$ ☐
20. $7 \times 7 =$ ☐

LIST E

1. $50 \div 10 =$ ☐
2. $2 \times 10 =$ ☐
3. $0 \times 8 =$ ☐
4. $2 \div 2 =$ ☐
5. $2 \times 1 =$ ☐
6. $6 \times 2 =$ ☐
7. $9 \times 1 =$ ☐
8. $12 \div 3 =$ ☐
9. $3 \times 1 =$ ☐
10. $14 \div 2 =$ ☐
11. $40 \div 8 =$ ☐
12. $5 \times 7 =$ ☐
13. $9 \times 2 =$ ☐
14. $24 \div 4 =$ ☐
15. $16 \div 4 =$ ☐
16. $64 \div 8 =$ ☐
17. $63 \div 9 =$ ☐
18. $8 \times 7 =$ ☐
19. $36 \div 9 =$ ☐
20. $7 \times 8 =$ ☐

LIST F

1. $3 \times 0 =$ ☐
2. $60 \div 10 =$ ☐
3. $10 \times 0 =$ ☐
4. $3 \div 3 =$ ☐
5. $1 \times 1 =$ ☐
6. $3 \times 3 =$ ☐
7. $7 \times 1 =$ ☐
8. $12 \div 4 =$ ☐
9. $16 \div 2 =$ ☐
10. $4 \times 1 =$ ☐
11. $32 \div 8 =$ ☐
12. $5 \times 8 =$ ☐
13. $4 \times 6 =$ ☐
14. $27 \div 9 =$ ☐
15. $30 \div 6 =$ ☐
16. $35 \div 7 =$ ☐
17. $63 \div 7 =$ ☐
18. $8 \times 8 =$ ☐
19. $7 \times 3 =$ ☐
20. $42 \div 6 =$ ☐



PUBLISHED IN NEW ZEALAND BY
THE OUTER EDGE LTD

© Copyright 2010 Barry Clayton

www.robitmccruncher.co.nz

I'm loving
this stuff!!



THE NEW NUMBER CRUNCHERS

BASIC NUMBER FACTS

LEVEL 6: Multiplying or Dividing - End answers only

LEVEL 6
SET 7

LIST A

1. $70 \div 10 = \square$
2. $1 \times 2 = \square$
3. $2 \times 2 = \square$
4. $0 \times 1 = \square$
5. $1 \div 1 = \square$
6. $3 \times 2 = \square$
7. $9 \times 2 = \square$
8. $10 \times 1 = \square$
9. $18 \div 2 = \square$
10. $4 \div 4 = \square$
11. $24 \div 3 = \square$
12. $35 \div 5 = \square$
13. $3 \times 6 = \square$
14. $3 \times 10 = \square$
15. $40 \div 4 = \square$
16. $45 \div 9 = \square$
17. $8 \times 9 = \square$
18. $42 \div 7 = \square$
19. $36 \div 4 = \square$
20. $5 \times 9 = \square$

LIST B

1. $80 \div 10 = \square$
2. $0 \times 3 = \square$
3. $10 \times 2 = \square$
4. $1 \times 5 = \square$
5. $2 \times 1 = \square$
6. $4 \times 2 = \square$
7. $9 \times 2 = \square$
8. $5 \times 0 = \square$
9. $20 \div 2 = \square$
10. $5 \div 5 = \square$
11. $48 \div 6 = \square$
12. $3 \times 7 = \square$
13. $27 \div 9 = \square$
14. $4 \times 10 = \square$
15. $50 \div 5 = \square$
16. $49 \div 7 = \square$
17. $48 \div 8 = \square$
18. $32 \div 4 = \square$
19. $7 \times 9 = \square$
20. $6 \times 8 = \square$

LIST C

1. $10 \times 4 = \square$
2. $3 \div 1 = \square$
3. $1 \times 4 = \square$
4. $2 \times 3 = \square$
5. $0 \times 5 = \square$
6. $5 \times 1 = \square$
7. $9 \times 10 = \square$
8. $90 \div 10 = \square$
9. $9 \div 3 = \square$
10. $6 \div 6 = \square$
11. $63 \div 7 = \square$
12. $28 \div 7 = \square$
13. $3 \times 8 = \square$
14. $5 \times 10 = \square$
15. $30 \div 3 = \square$
16. $56 \div 7 = \square$
17. $72 \div 9 = \square$
18. $6 \times 7 = \square$
19. $9 \times 9 = \square$
20. $27 \div 3 = \square$

LIST D

1. $100 \div 10 = \square$
2. $4 \div 1 = \square$
3. $1 \times 6 = \square$
4. $10 \times 3 = \square$
5. $0 \times 4 = \square$
6. $8 \times 1 = \square$
7. $6 \times 10 = \square$
8. $4 \times 0 = \square$
9. $8 \div 4 = \square$
10. $7 \div 7 = \square$
11. $6 \times 4 = \square$
12. $3 \times 5 = \square$
13. $3 \times 9 = \square$
14. $60 \div 6 = \square$
15. $15 \div 5 = \square$
16. $54 \div 9 = \square$
17. $28 \div 7 = \square$
18. $54 \div 6 = \square$
19. $9 \times 6 = \square$
20. $48 \div 8 = \square$

LIST E

1. $10 \times 5 = \square$
2. $5 \div 1 = \square$
3. $1 \times 3 = \square$
4. $0 \times 2 = \square$
5. $2 \times 4 = \square$
6. $8 \times 2 = \square$
7. $7 \times 10 = \square$
8. $4 \div 2 = \square$
9. $10 \div 5 = \square$
10. $8 \div 8 = \square$
11. $6 \times 5 = \square$
12. $4 \times 4 = \square$
13. $4 \times 7 = \square$
14. $80 \div 8 = \square$
15. $20 \div 5 = \square$
16. $72 \div 9 = \square$
17. $32 \div 8 = \square$
18. $72 \div 8 = \square$
19. $9 \times 7 = \square$
20. $56 \div 8 = \square$

LIST F

1. $6 \div 3 = \square$
2. $0 \times 6 = \square$
3. $2 \times 5 = \square$
4. $1 \times 7 = \square$
5. $6 \div 1 = \square$
6. $5 \times 2 = \square$
7. $8 \times 10 = \square$
8. $10 \times 6 = \square$
9. $12 \div 6 = \square$
10. $9 \div 9 = \square$
11. $42 \div 7 = \square$
12. $5 \times 3 = \square$
13. $4 \times 8 = \square$
14. $70 \div 7 = \square$
15. $20 \div 4 = \square$
16. $63 \div 9 = \square$
17. $36 \div 9 = \square$
18. $6 \times 6 = \square$
19. $9 \times 8 = \square$
20. $64 \div 8 = \square$



PUBLISHED IN NEW ZEALAND BY
THE OUTER EDGE LTD

© Copyright 2010 Barry Clayton

www.robitmccruncher.co.nz

I'm loving
this stuff!!



THE NEW NUMBER CRUNCHERS

BASIC NUMBER FACTS

LEVEL 6: Multiplying or Dividing - End answers only

LEVEL 6
SET 10

LIST A

1. $8 \div 2 = \square$
2. $7 \div 1 = \square$
3. $2 \times 6 = \square$
4. $1 \times 8 = \square$
5. $0 \times 7 = \square$
6. $4 \times 3 = \square$
7. $8 \times 0 = \square$
8. $10 \times 7 = \square$
9. $14 \div 7 = \square$
10. $10 \div 10 = \square$
11. $24 \div 6 = \square$
12. $21 \div 3 = \square$
13. $4 \times 9 = \square$
14. $12 \div 4 = \square$
15. $30 \div 5 = \square$
16. $81 \div 9 = \square$
17. $56 \div 7 = \square$
18. $7 \times 6 = \square$
19. $8 \times 3 = \square$
20. $40 \div 5 = \square$

LIST B

1. $2 \times 7 = \square$
2. $1 \times 9 = \square$
3. $20 \div 10 = \square$
4. $0 \times 9 = \square$
5. $8 \div 1 = \square$
6. $7 \times 0 = \square$
7. $3 \times 4 = \square$
8. $16 \div 2 = \square$
9. $10 \times 8 = \square$
10. $6 \div 2 = \square$
11. $28 \div 4 = \square$
12. $4 \times 5 = \square$
13. $5 \times 5 = \square$
14. $25 \div 5 = \square$
15. $15 \div 3 = \square$
16. $72 \div 8 = \square$
17. $54 \div 9 = \square$
18. $7 \times 5 = \square$
19. $8 \times 4 = \square$
20. $35 \div 7 = \square$

LIST C

1. $18 \div 9 = \square$
2. $1 \times 0 = \square$
3. $30 \div 10 = \square$
4. $1 \times 10 = \square$
5. $9 \div 1 = \square$
6. $6 \times 0 = \square$
7. $7 \times 2 = \square$
8. $2 \times 8 = \square$
9. $10 \times 9 = \square$
10. $10 \div 2 = \square$
11. $24 \div 3 = \square$
12. $5 \times 4 = \square$
13. $6 \times 9 = \square$
14. $18 \div 6 = \square$
15. $20 \div 4 = \square$
16. $56 \div 8 = \square$
17. $49 \div 7 = \square$
18. $7 \times 4 = \square$
19. $8 \times 5 = \square$
20. $45 \div 5 = \square$

LIST D

1. $10 \times 10 = \square$
2. $10 \div 1 = \square$
3. $40 \div 10 = \square$
4. $2 \times 0 = \square$
5. $0 \times 10 = \square$
6. $9 \times 0 = \square$
7. $6 \times 1 = \square$
8. $12 \div 2 = \square$
9. $21 \div 7 = \square$
10. $2 \times 9 = \square$
11. $45 \div 9 = \square$
12. $5 \times 6 = \square$
13. $36 \div 6 = \square$
14. $18 \div 3 = \square$
15. $6 \times 3 = \square$
16. $54 \div 6 = \square$
17. $81 \div 9 = \square$
18. $8 \times 6 = \square$
19. $90 \div 9 = \square$
20. $7 \times 7 = \square$

LIST E

1. $14 \div 2 = \square$
2. $0 \times 8 = \square$
3. $2 \times 10 = \square$
4. $2 \times 1 = \square$
5. $2 \div 2 = \square$
6. $9 \times 1 = \square$
7. $6 \times 2 = \square$
8. $3 \times 1 = \square$
9. $12 \div 3 = \square$
10. $50 \div 10 = \square$
11. $7 \times 8 = \square$
12. $9 \times 2 = \square$
13. $5 \times 7 = \square$
14. $16 \div 4 = \square$
15. $24 \div 4 = \square$
16. $63 \div 9 = \square$
17. $64 \div 8 = \square$
18. $36 \div 9 = \square$
19. $8 \times 7 = \square$
20. $40 \div 8 = \square$

LIST F

1. $4 \times 1 = \square$
2. $10 \times 0 = \square$
3. $60 \div 10 = \square$
4. $1 \times 1 = \square$
5. $3 \div 3 = \square$
6. $7 \times 1 = \square$
7. $3 \times 3 = \square$
8. $16 \div 2 = \square$
9. $12 \div 4 = \square$
10. $3 \times 0 = \square$
11. $42 \div 6 = \square$
12. $4 \times 6 = \square$
13. $5 \times 8 = \square$
14. $30 \div 6 = \square$
15. $27 \div 9 = \square$
16. $63 \div 7 = \square$
17. $35 \div 7 = \square$
18. $7 \times 3 = \square$
19. $8 \times 8 = \square$
20. $32 \div 8 = \square$



PUBLISHED IN NEW ZEALAND BY
THE OUTER EDGE LTD

© Copyright 2010 Barry Clayton

www.robitmccruncher.co.nz

I'm loving
this stuff!!



THE NEW NUMBER CRUNCHERS

BASIC NUMBER FACTS

LEVEL 6: Multiplying or Dividing - End answers only

LEVEL 6
SET 9

LIST A

1. $1 \times 2 = \square$
2. $2 \times 2 = \square$
3. $4 \div 4 = \square$
4. $0 \times 1 = \square$
5. $1 \div 1 = \square$
6. $18 \div 2 = \square$
7. $3 \times 2 = \square$
8. $9 \times 2 = \square$
9. $70 \div 10 = \square$
10. $10 \times 1 = \square$
11. $35 \div 5 = \square$
12. $3 \times 6 = \square$
13. $5 \times 9 = \square$
14. $3 \times 10 = \square$
15. $40 \div 4 = \square$
16. $8 \times 9 = \square$
17. $42 \div 7 = \square$
18. $45 \div 9 = \square$
19. $24 \div 3 = \square$
20. $36 \div 4 = \square$

LIST B

1. $0 \times 3 = \square$
2. $10 \times 2 = \square$
3. $5 \div 5 = \square$
4. $1 \times 5 = \square$
5. $0 \times 3 = \square$
6. $20 \div 2 = \square$
7. $4 \times 2 = \square$
8. $9 \times 2 = \square$
9. $80 \div 10 = \square$
10. $5 \times 0 = \square$
11. $27 \div 9 = \square$
12. $3 \times 7 = \square$
13. $6 \times 8 = \square$
14. $4 \times 10 = \square$
15. $50 \div 5 = \square$
16. $7 \times 9 = \square$
17. $49 \div 7 = \square$
18. $48 \div 8 = \square$
19. $48 \div 6 = \square$
20. $32 \div 4 = \square$

LIST C

1. $3 \div 1 = \square$
2. $1 \times 4 = \square$
3. $6 \div 6 = \square$
4. $2 \times 3 = \square$
5. $0 \times 5 = \square$
6. $9 \div 3 = \square$
7. $5 \times 1 = \square$
8. $9 \times 10 = \square$
9. $10 \times 4 = \square$
10. $90 \div 10 = \square$
11. $28 \div 7 = \square$
12. $3 \times 8 = \square$
13. $27 \div 3 = \square$
14. $5 \times 10 = \square$
15. $30 \div 3 = \square$
16. $9 \times 9 = \square$
17. $56 \div 7 = \square$
18. $72 \div 9 = \square$
19. $63 \div 7 = \square$
20. $6 \times 7 = \square$

LIST D

1. $4 \div 1 = \square$
2. $1 \times 6 = \square$
3. $7 \div 7 = \square$
4. $10 \times 3 = \square$
5. $0 \times 4 = \square$
6. $8 \div 4 = \square$
7. $8 \times 1 = \square$
8. $6 \times 10 = \square$
9. $100 \div 10 = \square$
10. $4 \times 0 = \square$
11. $3 \times 5 = \square$
12. $3 \times 9 = \square$
13. $48 \div 8 = \square$
14. $60 \div 6 = \square$
15. $15 \div 5 = \square$
16. $9 \times 6 = \square$
17. $54 \div 9 = \square$
18. $28 \div 7 = \square$
19. $6 \times 4 = \square$
20. $54 \div 6 = \square$

LIST E

1. $5 \div 1 = \square$
2. $1 \times 3 = \square$
3. $8 \div 8 = \square$
4. $0 \times 2 = \square$
5. $2 \times 4 = \square$
6. $10 \div 5 = \square$
7. $8 \times 2 = \square$
8. $7 \times 10 = \square$
9. $10 \times 5 = \square$
10. $4 \div 2 = \square$
11. $4 \times 4 = \square$
12. $4 \times 7 = \square$
13. $56 \div 8 = \square$
14. $80 \div 8 = \square$
15. $20 \div 5 = \square$
16. $9 \times 7 = \square$
17. $72 \div 9 = \square$
18. $32 \div 8 = \square$
19. $6 \times 5 = \square$
20. $72 \div 8 = \square$

LIST F

1. $0 \times 6 = \square$
2. $2 \times 5 = \square$
3. $9 \div 9 = \square$
4. $1 \times 7 = \square$
5. $6 \div 1 = \square$
6. $12 \div 6 = \square$
7. $5 \times 2 = \square$
8. $8 \times 10 = \square$
9. $6 \div 3 = \square$
10. $10 \times 6 = \square$
11. $5 \times 3 = \square$
12. $4 \times 8 = \square$
13. $64 \div 8 = \square$
14. $70 \div 7 = \square$
15. $20 \div 4 = \square$
16. $9 \times 8 = \square$
17. $63 \div 9 = \square$
18. $36 \div 9 = \square$
19. $42 \div 7 = \square$
20. $6 \times 6 = \square$



PUBLISHED IN NEW ZEALAND BY
THE OUTER EDGE LTD

© Copyright 2010 Barry Clayton

www.robitmccruncher.co.nz

I'm loving
this stuff!!



THE NEW NUMBER CRUNCHERS

BASIC NUMBER FACTS

LEVEL 6: Multiplying or Dividing - End answers only



LIST A

1. $7 \div 1 = \square$
2. $2 \times 6 = \square$
3. $10 \div 10 = \square$
4. $1 \times 8 = \square$
5. $0 \times 7 = \square$
6. $14 \div 7 = \square$
7. $4 \times 3 = \square$
8. $8 \times 0 = \square$
9. $8 \div 2 = \square$
10. $10 \times 7 = \square$
11. $21 \div 3 = \square$
12. $4 \times 9 = \square$
13. $40 \div 5 = \square$
14. $12 \div 4 = \square$
15. $30 \div 5 = \square$
16. $8 \times 3 = \square$
17. $81 \div 9 = \square$
18. $56 \div 7 = \square$
19. $24 \div 6 = \square$
20. $7 \times 6 = \square$

LIST B

1. $1 \times 9 = \square$
2. $20 \div 10 = \square$
3. $6 \div 2 = \square$
4. $0 \times 9 = \square$
5. $8 \div 1 = \square$
6. $10 \times 8 = \square$
7. $7 \times 0 = \square$
8. $3 \times 4 = \square$
9. $2 \times 7 = \square$
10. $16 \div 8 = \square$
11. $4 \times 5 = \square$
12. $5 \times 5 = \square$
13. $35 \div 7 = \square$
14. $215 \div 5 = \square$
15. $15 \div 3 = \square$
16. $8 \times 4 = \square$
17. $72 \div 8 = \square$
18. $54 \div 9 = \square$
19. $28 \div 4 = \square$
20. $7 \times 5 = \square$

LIST C

1. $1 \times 0 = \square$
2. $30 \div 10 = \square$
3. $10 \div 2 = \square$
4. $1 \times 10 = \square$
5. $9 \div 1 = \square$
6. $10 \times 9 = \square$
7. $6 \times 0 = \square$
8. $7 \times 2 = \square$
9. $18 \div 9 = \square$
10. $2 \times 8 = \square$
11. $5 \times 4 = \square$
12. $6 \times 9 = \square$
13. $45 \div 5 = \square$
14. $18 \div 6 = \square$
15. $20 \div 4 = \square$
16. $8 \times 5 = \square$
17. $56 \div 8 = \square$
18. $49 \div 7 = \square$
19. $24 \div 3 = \square$
20. $7 \times 4 = \square$

LIST D

1. $10 \div 1 = \square$
2. $40 \div 10 = \square$
3. $2 \times 9 = \square$
4. $2 \times 0 = \square$
5. $0 \times 10 = \square$
6. $21 \div 7 = \square$
7. $9 \times 0 = \square$
8. $6 \times 1 = \square$
9. $10 \times 10 = \square$
10. $12 \div 2 = \square$
11. $6 \times 3 = \square$
12. $5 \times 6 = \square$
13. $36 \div 6 = \square$
14. $90 \div 9 = \square$
15. $18 \div 3 = \square$
16. $8 \times 6 = \square$
17. $54 \div 6 = \square$
18. $81 \div 9 = \square$
19. $7 \times 7 = \square$
20. $45 \div 9 = \square$

LIST E

1. $0 \times 8 = \square$
2. $2 \times 10 = \square$
3. $50 \div 10 = \square$
4. $2 \times 1 = \square$
5. $2 \div 2 = \square$
6. $12 \div 3 = \square$
7. $9 \times 1 = \square$
8. $6 \times 2 = \square$
9. $14 \div 2 = \square$
10. $3 \times 1 = \square$
11. $9 \times 2 = \square$
12. $5 \times 7 = \square$
13. $40 \div 8 = \square$
14. $16 \div 4 = \square$
15. $24 \div 4 = \square$
16. $8 \times 7 = \square$
17. $63 \div 9 = \square$
18. $64 \div 8 = \square$
19. $7 \times 8 = \square$
20. $36 \div 9 = \square$

LIST F

1. $10 \times 0 = \square$
2. $60 \div 10 = \square$
3. $3 \times 0 = \square$
4. $1 \times 1 = \square$
5. $3 \div 3 = \square$
6. $12 \div 4 = \square$
7. $7 \times 1 = \square$
8. $3 \times 3 = \square$
9. $4 \times 1 = \square$
10. $16 \div 2 = \square$
11. $4 \times 6 = \square$
12. $5 \times 8 = \square$
13. $32 \div 8 = \square$
14. $30 \div 6 = \square$
15. $27 \div 9 = \square$
16. $8 \times 8 = \square$
17. $63 \div 7 = \square$
18. $35 \div 7 = \square$
19. $42 \div 6 = \square$
20. $7 \times 3 = \square$

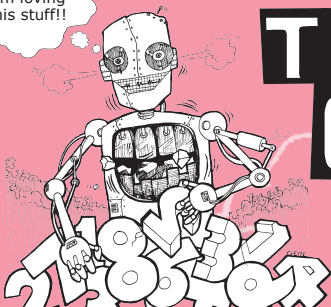


PUBLISHED IN NEW ZEALAND BY
THE OUTER EDGE LTD

© Copyright 2010 Barry Clayton

www.robitmccruncher.co.nz

I'm loving
this stuff!!



THE NEW NUMBER CRUNCHERS

BASIC NUMBER FACTS
ANSWERS FOR ALL SETS AT THIS LEVEL

LEVEL 6
ANSWERS

SET 1							
LIST							
	A	B	C	D	E	F	
1	0	5	6	30	0	7	
2	1	2	0	0	8	6	
3	2	0	3	4	5	0	
4	4	20	4	6	3	10	
5	1	1	1	1	1	1	
6	7	8	40	10	50	2	
7	10	0	9	0	2	60	
8	9	10	3	2	2	2	
9	6	8	5	8	16	10	
10	18	45	90	60	70	80	
11	30	40	50	10	10	10	
12	10	10	10	3	4	5	
13	7	3	4	15	16	15	
14	18	21	24	27	28	32	
15	45	48	9	6	7	8	
16	8	8	9	24	30	6	
17	9	8	42	9	9	36	
18	72	63	81	54	63	72	
19	6	7	8	6	8	7	
20	5	6	8	4	4	4	

SET 2							
LIST							
	A	B	C	D	E	F	
1	8	0	10	0	2	1	
2	0	8	9	0	1	1	
3	7	9	0	10	0	0	
4	12	2	3	4	20	6	
5	1	3	5	18	5	0	
6	4	14	2	100	7	4	
7	70	2	16	6	3	8	
8	2	80	90	3	4	3	
9	12	0	0	6	9	7	
10	0	12	14	0	12	9	
11	3	5	3	10	4	5	
12	6	5	5	6	6	3	
13	7	20	20	18	18	24	
14	36	25	54	30	35	40	
15	8	5	9	6	5	4	
16	4	7	8	49	56	7	
17	42	35	28	5	4	21	
18	24	32	40	48	56	64	
19	9	9	7	9	7	9	
20	8	6	7	9	8	5	

SET 3							
LIST							
	A	B	C	D	E	F	
1	1	2	0	0	8	6	
2	0	5	6	30	0	7	
3	4	20	4	6	3	10	
4	2	0	3	4	5	0	
5	7	8	40	10	50	2	
6	1	1	1	1	1	1	
7	9	10	3	2	2	2	
8	10	0	9	0	2	60	
9	18	18	90	60	70	80	
10	6	8	5	8	16	10	
11	10	10	10	3	4	5	
12	30	40	50	10	10	10	
13	18	3	24	27	28	32	
14	7	21	4	15	16	15	
15	8	8	9	24	30	6	
16	45	48	9	6	7	8	
17	9	63	81	54	63	72	
18	6	8	42	9	9	36	
19	72	6	8	4	4	4	
20	5	7	8	6	8	7	

SET 4							
LIST							
	A	B	C	D	E	F	
1	0	8	9	0	1	1	
2	8	0	10	0	2	1	
3	12	2	3	4	20	6	
4	7	9	0	10	0	0	
5	4	14	2	100	7	4	
6	1	3	5	18	5	0	
7	2	80	90	3	4	3	
8	70	8	16	6	3	8	
9	0	12	14	6	12	9	
10	12	0	0	0	9	7	
11	6	5	5	18	6	3	
12	3	5	3	6	4	5	
13	36	25	54	6	35	40	
14	7	20	20	30	18	24	
15	4	7	8	5	56	7	
16	8	5	9	49	5	4	
17	24	32	40	10	56	64	
18	42	35	28	48	4	21	
19	8	6	7	9	8	5	
20	9	9	7	9	7	9	

SET 5							
LIST							
	A	B	C	D	E	F	
1	1	1	1	1	1	1	
2	4	20	4	6	3	10	
3	2	0	3	4	5	0	
4	1	2	0	0	8	6	
5	0	5	6	30	2	7	
6	18	18	90	60	70	80	
7	6	8	5	8	16	10	
8	9	10	3	2	2	2	
9	10	0	9	0	2	60	
10	7	8	40	10	50	2	
11	45	48	9	6	7	32	
12	18	21	24	27	28	8	
13	7	3	4	15	16	15	
14	10	10	10	3	4	5	
15	30	40	50	10	10	10	
16	5	6	8	4	4	4	
17	6	7	8	6	8	7	
18	72	63	81	54	63	72	
19	9	8	42	9	9	36	
20	8	8	9	24	30	6	

SET 6							
LIST							
	A	B	C	D	E	F	
1	1	3	5	18	5	0	
2	12	2	3	4	20	6	
3	7	9	0	10	0	0	
4	0	8	9	0	1	1	
5	8	0	10	0	2	1	
6	0	12	14	6	12	9	
7	12	0	0	0	9	7	
8	2	80	90	3	4	3	
9	70	2	16	6	3	8	
10	4	14	2	100	7	4	
11	8	5	9	6	5	4	
12	36	25	54	30	35	40	
13	7	20	20	18	18	24	
14	6	5	5	6	6	3	
15	3	5	3	10	4	5	
16	8	6	7	9	8	5	
17	9	9	7	9	7	9	
18	24	32	40	48	56	64	
19	42	35	28	5	4	21	
20	4	7	6	49	56	7	

SET 7							
LIST							
	A	B	C	D	E	F	
1	7	8	40	10	50	2	
2	2	0	3	4	5	0	
3	4	20	4	6	3	10	
4	0	5	6	30	0	7	
5	1	2	0	0	8	6	
6	6	8	5	8	16	10	
7	18	18	90	60	70	80	
8	10	0	9	0	2	60	
9	9	10	3	2	2	2	
10	1	1	1	1	1	1	
11	8	8	9	24	30	6	
12	7	21	4	15	16	15	
13	18	3	24	27	28	32	
14	30	40	50	10	10	10	
15	10	10	10	3	4	5	
16	5	7	8	6	8	7	
17	72	6	8	4	4	4	
18	6	8	42	9	9	36	
19	9	63	81	54	63	72	
20	45	48	9	6	7	8	

SET 8							
LIST							
	A	B	C	D	E	F	
1	4	14	2	100	7	4	
2	7	9	0	10	0	0	
3	12	2	3	4	20	6	
4	8	0	10	0	2	1	
5	0	8	9	0	1	1	
6	12	0	0	0	9	7	
7	0	12	14	6	12	9	
8	70	8	16	6	3	8	
9	2	80	90	3	4	3	
10	1	3	5	18	5	0	
11	4	7	8	5	56	7	
12	7	20	20	30	18	28	
13	36	25	54	6	35	40	
14	3	5	3	6	4	5	
15	6	5	5	18	6	3	
16	9	9	7	9	7	9	
17	8	6	7	9	8	5	
18	42	35	28	48	4	21	
19	24	32	40	10	56	64	
20	8	5	9	49	5	4	

SET 9							
LIST							
	A	B	C	D	E	F	
1	2	0	3	4	5	0	
2	4	20	4	6	3	10	
3	1	1	1	1	1	1	
4	0	5	6	30	0	7	
5	1	0	0	0	8	6	
6	9	10	3	2	2	2	
7	6	8	5	8	16	10	
8	18	18	90	60	70	80	
9	7	8	40	10	50	2	
10	10	0	9	0	2	60	
11	7	3	4	15	16	15	
12	18	21	24	27	28	32	
13	45	48	9	6	7	8	
14	30	40	50	10	10	10	
15	10	10	10	3	4	5	
16	72	63	81	54	63	72	
17	6	7	8	6	8	7	
18	5	6	8	4	4	4	
19	8	8	9	24	30	6	
20	9	8	42	9	9	36	

	SET 10					
	LIST					
	A	B	C	D	E	
1	7	9	0	10	0	
2	12	2	3	4	20	
3	1	3	5	18	5	
4	8	0	10	0	2	
5	0	8	9	0	1	
6	2	80	90	3	4	
7	12	0	0	0	9	
8	0	12	14	6	12	
9	4	14	2100		7	
10	70	2	16	6	3	
11	7	20	20	18	18	
12	36	25	54	30	35	
13	8	5	9	6	5	
14	3	5	3	10	4	
15	6	5	5	6	6	
16	24	32	40	48	56	
17	9	9	7	9	7	
18	8	6	7	9	8	
19	4	7	6	49	56	
20	42	35	28	5	4	